



Quick Guide: Empower Mode of Astrasono A5Pro Bladder Scanner

1. Turn the System On/Off by pressing the power button.



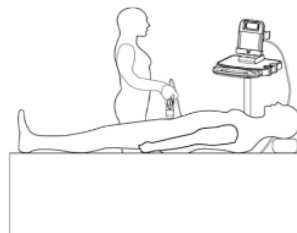
2. Enter the patient data



Note: Patient data could be input after the scanning based on clinical urgency.

a). Select the patient gender by touching the gender icon. Select "Child" icon to scan children under 120cm tall and weighing less than 25Kg.

b). Use the visual keyboard to enter the patient NAME / ID /AGE.



Stand or sit at the patient's right

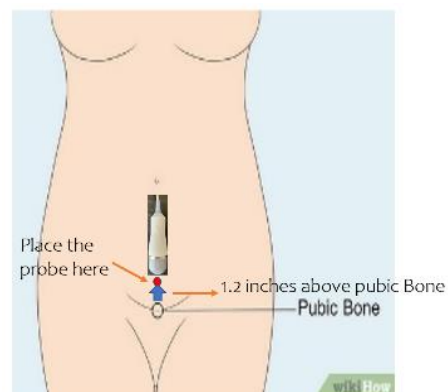
3. Place the Probe on Patient

a). Have the patient lie down flat. Stand or sit at the patient's right side.

b). Place an ample quantity of gel on the probe; Make sure the smiley face facing the patient's head directly.

c). Place the probe onto patient's abdomen, approximately 1.2 inches above pubic bone.

d). Using left and right as reference direction, position the probe at the center of the patient.



Position the probe at the center of the patient

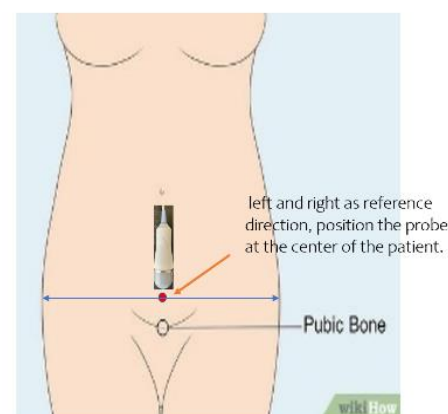
4. Finding the best bladder position in Empower Mode

a). Press the scanning button to start searching for the optimal bladder position.

b). Observe the position projected on the screen and make small adjustments to the probe's position until the projection is centered on the crosshair.

c). When the projection is centered on the crosshair, firmly press the probe against the patient's abdomen. Getting ready for the 3D scanning for the bladder.

d). Press the scanning button again; meanwhile, hold the probe steady until it completes scanning the 12 slices (total 5 seconds).

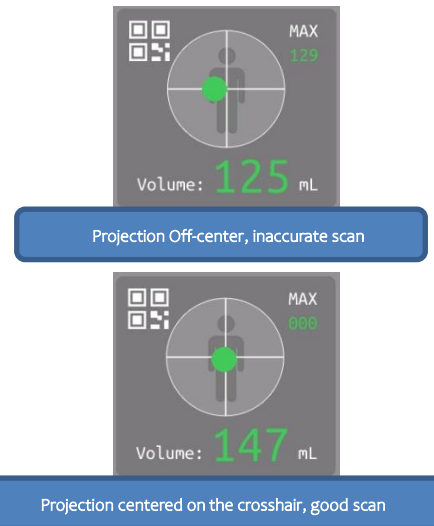


Position the probe at the center of the patient



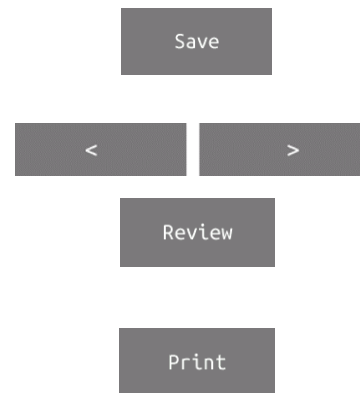
5. Accuracy Check

After scanning, check if the final projection position is centered on the crosshair. If it's significantly off-center, scan again. Take the maximum value from multiple scans.



6. Save, review and print

- a) Touch the SAVE button to save current scan.
- b) Touch the Left/Right button to review any two of the 12 planes of the current scan.
- c) Touch the REVIEW button to enter the Patient Data Management system to review the images and results of all saved scans. You must first save the current scan before you can review it.
- d) Touch the PRINT button to print the current scan. You can also print the other saved scans from the Patient Data Management System.



9. Finish exam

Once you have completed the scan, wipe the ultrasound gel off the patient and the Probe. Disinfect the probe with hospital-approved disinfection products.

